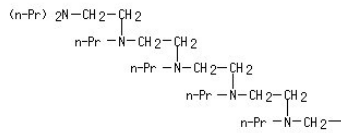


■ 構造図の改善例

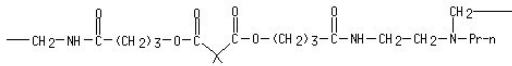
・ 分割表示されていた大きな構造図が一つに

従来

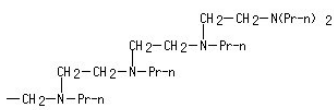
PAGE 1-A



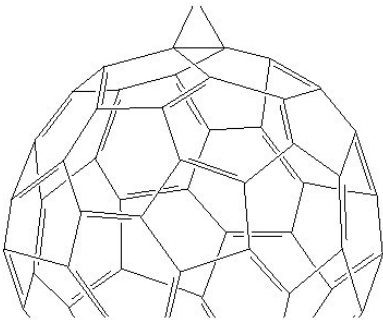
PAGE 1-B



PAGE 1-C



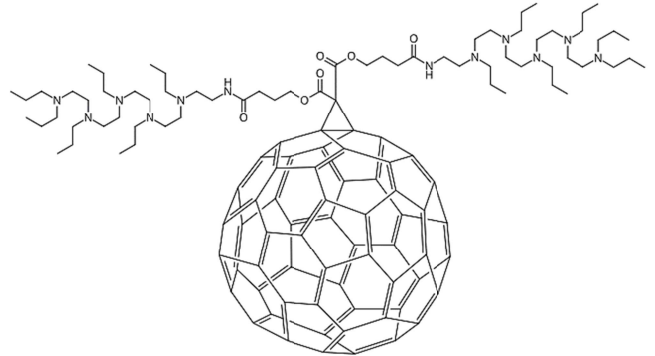
PAGE 2-B



PAGE 3-B



現在



・ 表示不可 (***) STRUCTURE DIAGRAM IS NOT AVAILABLE (***) だった構造が表示可能に

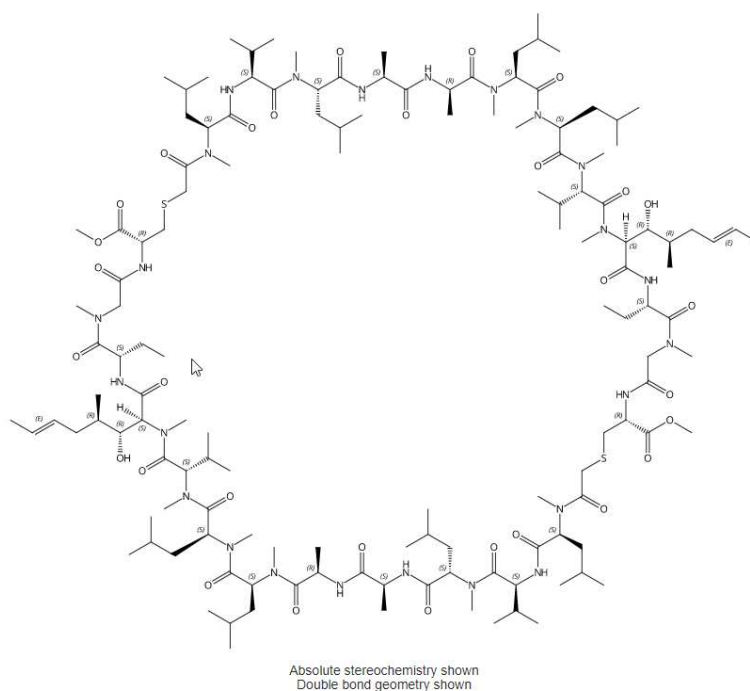
従来

RN 2251748-71-5 REGISTRY
 ED Entered STN: 06 Dec 2018
 CN INDEX NAME NOT YET ASSIGNED
 FS STEREOSEARCH
 MF C136 H240 N24 O30 S2
 SR CA
 LC STN Files: CA, CAPLUS

*** STRUCTURE DIAGRAM IS NOT AVAILABLE ***

PROPERTY DATA AVAILABLE IN THE 'PROP' FORMAT

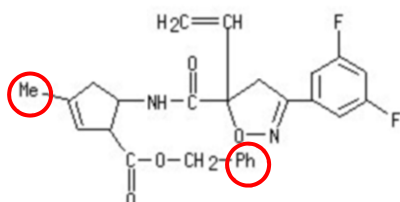
現在



・ ショートカット記号を構造で表示

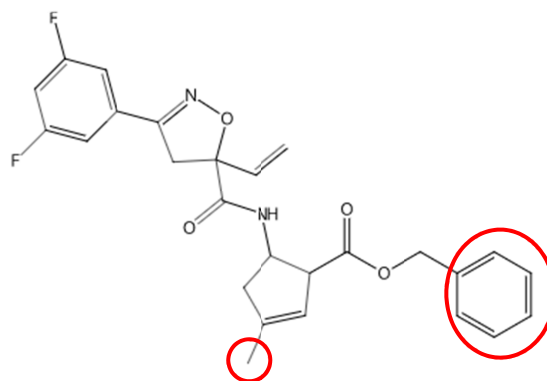
従来

RN 2374387-47-8 REGISTRY
 ED Entered STN: 06 Sep 2019
 CN 2-Cyclopentene-1-carboxylic acid, 5-[[[3-(3,5-
 4,5-dihydro-5-isoxazolyl]carbonyl]amino]-3-methyl
 (CA INDEX NAME)
 MF C26 H24 F2 N2 O4
 SR CA
 LC STN Files: CA, CAPLUS, TOXCENTER



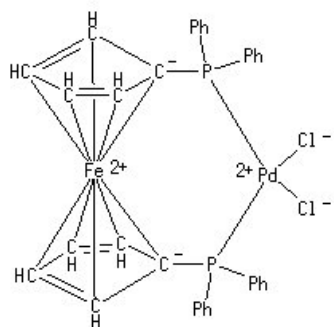
現在

RN 2374387-47-8 REGISTRY
 ED Entered STN: 06 Sep 2019
 CN 2-Cyclopentene-1-carboxylic acid, 5-[[[3-(3,5-
 4,5-dihydro-5-isoxazolyl]carbonyl]amino]-3-methyl
 (CA INDEX NAME)
 MF C26 H24 F2 N2 O4
 SR CA
 LC STN Files: CA, CAPLUS, TOXCENTER

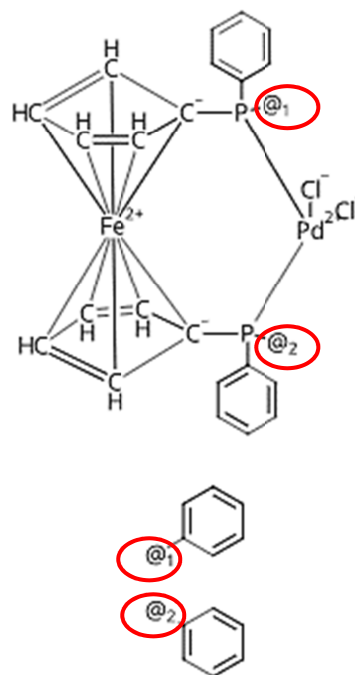


・ 結合部を @ で表示

従来

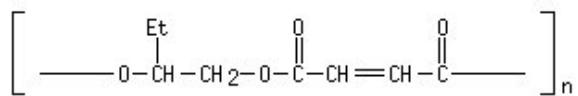


現在



・ 末端基なし SRU ポリマーの末端部分を * で表示

従来



現在

